



desert conservation  
PROGRAM  
respect, protect and enjoy our desert!

# Adaptive Management Program

Sue Wainscott, Sr. Environmental Specialist  
Lee Bice, Senior GIS Analyst

August 16, 2012





## Adaptive Management is...

...the use of evidence-based data and best scientific knowledge to improve management and programmatic actions and reduce the uncertainty inherent in those actions.

### Three steps:

1. Stop doing what doesn't work.
2. Figure out what might work, do it, and monitor it.
3. Repeat as needed.



It doesn't matter how many resources you have.



If you don't know how to use them,  
it will never be enough.



## Who is part of the MSHCP Adaptive Management Program?

- Science Advisors
- DCP Staff
- Agency Experts
- Academics
- Land Managers
- Decision Makers
- All Symposium Participants







desert conservation  
PROGRAM  
respect, protect and enjoy our desert!

## Adaptive Management Program: Increasing Effectiveness

### Science Advisor

- Ongoing regular involvement
- Subcontracts with other experts
- Advice on new projects



### Products:

Science-based Implementation  
Plan & Budget Recommendations

Regular science advice and  
suggestions





## Increasing Effectiveness

- Monitor effectiveness of specific conservation actions
  - Traffic on BCCE, modify law enforcement patrols and signage
  - Revegetation outcomes on Muddy River

### **Products:**

Better management practices, cost savings







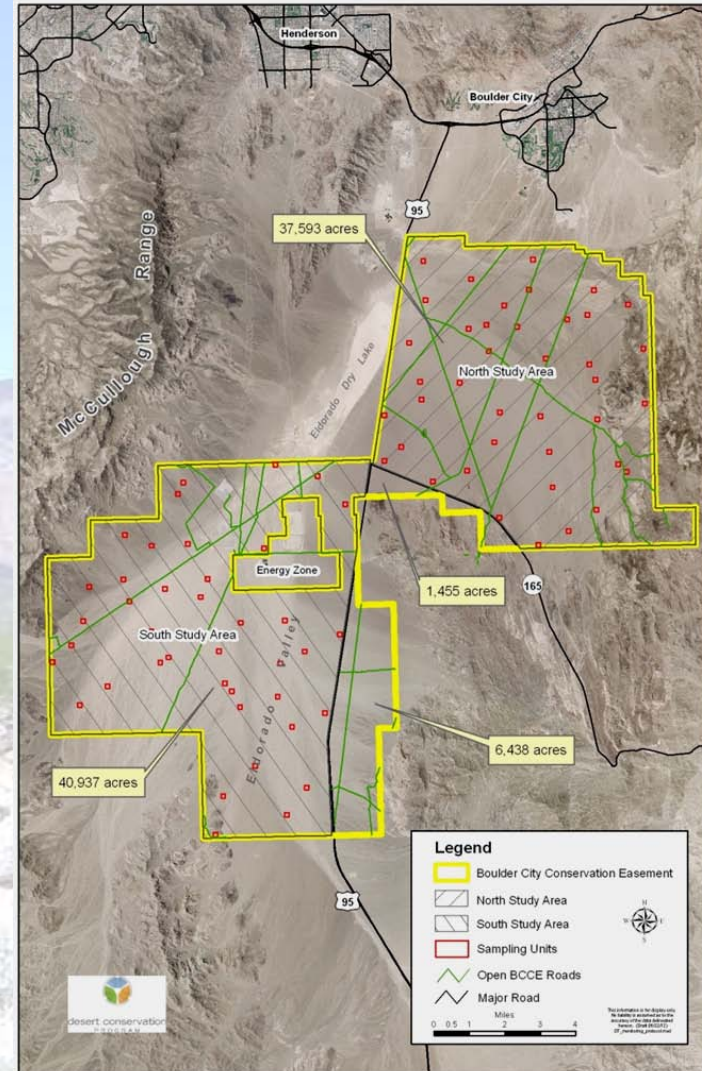
# Increasing Effectiveness

## – Monitoring evaluation and design

- Desert Tortoise Occupancy and Habitat Covariate Sampling Pilot Study
- In the BCCE
- Pilot test begins in 2013

## Products:

Monitoring tailored to MSHCP-scale questions





desert conservation  
PROGRAM  
respect, protect and enjoy our desert!

Adaptive Management Program:  
Increasing Effectiveness

## Increasing Effectiveness

Completed:

- Sahara Mustard Control Treatments (NPS)
- Road Monitoring by Volunteers (BLM & PIC)

Continuing:

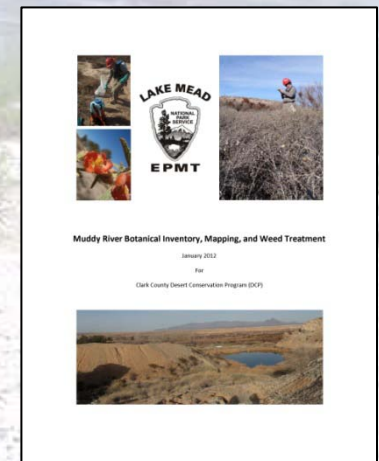
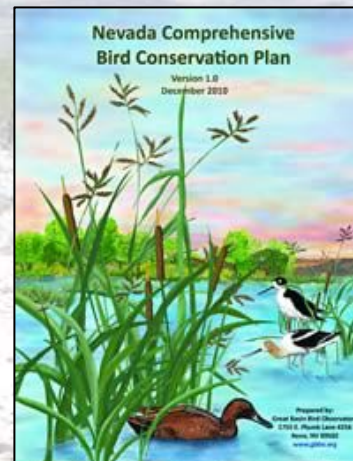
- Relict Leopard Frog Conservation Team (UNLV & NPS)
- Post-Fire Restoration Research (USGS)





# Reducing Uncertainty Using the Available Data

- Upgrade and updates to Species Status Database
- Workshop by Great Basin Bird Observatory on Nevada Bird Conservation Plan
- Muddy River Property Plant Inventory by NPS









# Transparency and Accessibility of Products

## – Symposia

- Annual, open to public
- Presentations made available on website

## – Peer Reviews

- 43 written reviews of presentations, documents and designs in past year

## **Products:**

This symposium, archives of presentations, written peer review comments, resulting improvements in other products





## Transparency and Accessibility of Products

- Data sharing with agencies
  - Sharing species data and reports
- Participating in Recovery Implementation Teams



*Bill Horn*



*USFWS*





1. Stop doing what doesn't work.  
We have focused funds on MSHCP goals and objectives.
2. Figure out what might work, do it, and monitor it.  
We have learned from other agencies and the literature, and are implementing a monitoring program for the BCCE.
3. Repeat as needed.  
We will watch for patterns in the available data that may need targeted analysis or changes in MSHCP mitigation actions.





desert conservation  
PROGRAM  
respect, protect and enjoy our desert!

# Questions?

Reports can be found at <http://bit.ly/A760YV>



Adaptive Management Program funded by:

MSHCP Mitigation Fee Section 10 funds (2009-CC-801)

Southern Nevada Public Lands Management Act, Round 6 (2005-CC-574)



